



AIRFRANCE/KLM

Stop the transport of lab animals!

Unlike most airlines, Air France-KLM still transports monkeys, dogs and other laboratory animals who are destined for a life of pain and suffering, resulting in certain death.

Traffic of Primates

Air France-KLM is the number one transporter of primates from Mauritius. Every year, 12,000 primates are used in European laboratories, regardless of a recent survey* that suggests that 80% of European citizens do not believe it is acceptable to experiment on monkeys.

Many of the monkeys used in research are captured from the wild, despite the fact that 26% of primate species are threatened with extinction. Currently 17 countries engage in this death trade, which encourages poaching.

Companies like Air France/KLM therefore deliberately take part in the mass killing of so called test animals to gain more profit. In doing so, they are directly involved in the vivisection industry, which depends on cooperation with companies like Air France/KLM, as especially the import of primates for vivisection into Europe relies on countries like Mauritius. A stop of carriage of animals by air would certainly have a serious impact on the vivisection industry.

Exports

The animals are hidden away in small transport crates, well out of public view. They must survive long and stressful flights, including various stopovers where they are often improperly cared for during journeys that can last upto 60 hours. According to the BUAV, 8 in 10 monkeys die before they reach the laboratories. It all takes place secretly, as who would feel good knowing that they return from holidays in the same plane that flies animals to death?

*Public consultation of the European Commission 2006



AIRFRANCE/KLM

Stop the transport of lab animals!

Unlike most airlines, Air France-KLM still transports monkeys, dogs and other laboratory animals who are destined for a life of pain and suffering, resulting in certain death.

Traffic of Primates

Air France-KLM is the number one transporter of primates from Mauritius. Every year, 12,000 primates are used in European laboratories, regardless of a recent survey* that suggests that 80% of European citizens do not believe it is acceptable to experiment on monkeys.

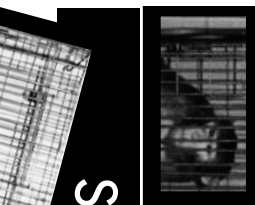
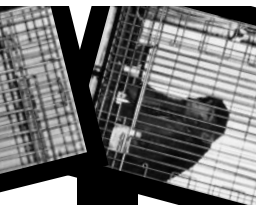
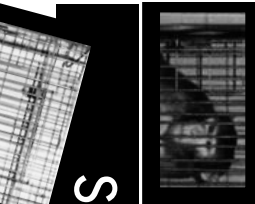
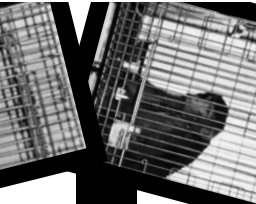
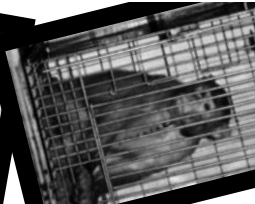
Many of the monkeys used in research are captured from the wild, despite the fact that 26% of primate species are threatened with extinction. Currently 17 countries engage in this death trade, which encourages poaching.

Companies like Air France/KLM therefore deliberately take part in the mass killing of so called test animals to gain more profit. In doing so, they are directly involved in the vivisection industry, which depends on cooperation with companies like Air France/KLM, as especially the import of primates for vivisection into Europe relies on countries like Mauritius. A stop of carriage of animals by air would certainly have a serious impact on the vivisection industry.

Exports

The animals are hidden away in small transport crates, well out of public view. They must survive long and stressful flights, including various stopovers where they are often improperly cared for during journeys that can last upto 60 hours. According to the BUAV, 8 in 10 monkeys die before they reach the laboratories. It all takes place secretly, as who would feel good knowing that they return from holidays in the same plane that flies animals to death?

*Public consultation of the European Commission 2006



„There are, in fact, only two categories of doctors and scientists who are not opposed to vivisection: those who don't know enough about it, and those who make mon from it.“

Dr. W. Hartinger

Laboratories

The animals are condemned to a life of physical and mental suffering. They are used in experiments to develop new drugs, toxicology experiments to evaluate chemicals and so called fundamental research.

However, more and more scientists agree that the animal model is not relevant to human beings because no species of animal is a biological model of an other.

Sadly, researchers continue to massacre 800 million animals every year, encouraged by a seemingly inexhaustible source of funding.



Stop This Traffic

How can it be that Air France-KLM continues the violent transport of animals to laboratories when animal experimentation is such an extreme form of systematic violence against animals?

Please demand that Air France-KLM is no longer complicit in this violent trade and stops condemning animals to a life of physical and mental suffering!

Air France-KLM
45 rue de Paris
95747 Roissy CDG Cedex
France

Take part in the protests against Air France/KLM!

More information: airsouffrance.fr/en

„There are, in fact, only two categories of doctors and scientists who are not opposed to vivisection: those who don't know enough about it, and those who make mon from it.“

Dr. W. Hartinger

Laboratories

The animals are condemned to a life of physical and mental suffering. They are used in experiments to develop new drugs, toxicology experiments to evaluate chemicals and so called fundamental research.

However, more and more scientists agree that the animal model is not relevant to human beings because no species of animal is a biological model of an other.

Sadly, researchers continue to massacre 800 million animals every year, encouraged by a seemingly inexhaustible source of funding.



Stop This Traffic

How can it be that Air France-KLM continues the violent transport of animals to laboratories when animal experimentation is such an extreme form of systematic violence against animals?

Please demand that Air France-KLM is no longer complicit in this violent trade and stops condemning animals to a life of physical and mental suffering!

Air France-KLM
45 rue de Paris
95747 Roissy CDG Cedex
France

Take part in the protests against Air France/KLM!

More information: airsouffrance.fr/en